

THERMTRONIX®

SOLID STATE ELECTRIC ALUMINUM

MELTING & HOLDING DIP-OUT FURNACES

- **THERMTRONIX®**
**STANDARD FEATURES
INCLUDE:**

100% solid state power control uses only the exact amount of energy required to achieve and maintain precise temperature. Auto/Manual Switch allows fully automatic or manual operation. Automatic demand limiting to reduce power costs during peak demand periods. Solid State 7-day Timer allows automatic preset adjustments to pouring temperature. Large LED display shows both metal temperature and set point.



- **THERMTRONIX®** builds added value into every furnace with features like: Pneumatic furnace lid with operator hand/foot valve; ground fault system and integral over-current protection circuit breaker for total high voltage isolation; three direct reading ammeters. Powerguard™ control system assures maximum performance and extended heating element life. Immersion thermocouple and solid state controller automatically adjusts metal temperatures. Metal leak detector system indicates metal leakage.

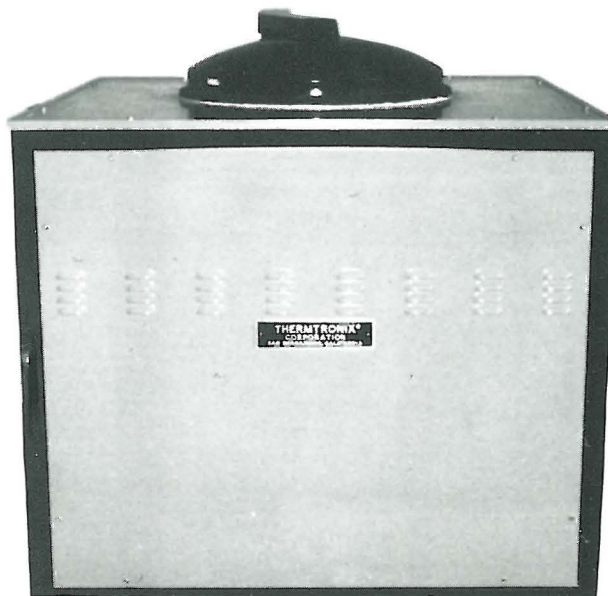
RS - SERIES ROLLED STEEL SHELL FURNACE

TWO AVAILABLE MODELS, ONE QUALITY PRODUCT BY **THERMTRONIX®**

SF - SERIES STEEL FRAME BOX FURNACE

- WHEREVER **QUALITY** IS THE KEY WORD IN **ALUMINUM MELTING** - **THERMTRONIX®** IS THE SOLUTION!

- **THERMTRONIX®** solid state melting furnaces reduce hydrogen porosity, inclusions, and metal contamination. The undisturbed bath with limited surface area and the elimination of combustion by-products greatly reduce dross formation assuring metal loss of less than 1%. Degassing time and expense are dramatically reduced and costly exhaust systems eliminated.



- **ENERGY EFFICIENT** **THERMTRONIX®** solid state power control assures maximum melting power and efficiency, utilizing only the exact amount of energy required to achieve and maintain precise temperature control. No maintenance prone on-off mechanical contactors.
- **FLEXIBILITY** **THERMTRONIX®** crucible type furnace design permits easy alloy changes. Temperature can be adjusted quickly and there is no need for holding large quantities of metal during off-shift hours. Melts aluminum, zinc, magnesium and lead.

PRODUCT BULLETIN 1205



SOLID STATE ELECTRIC ALUMINUM

MELTING & HOLDING DIP-OUT FURNACES

THERMTRONIX® Solid State Melting Systems represent the highest quality, most energy efficient, productive, aluminum and low temperature alloy melting system available on the market today. A combination of solid state power control, heavy duty self-supporting Power Panels™ in a completely uniform cylindrical heating chamber, micro-processor based temperature control, multi-layered insulating system, and rugged "total access" steel frame design assure a constant supply of the highest quality aluminum produced at the lowest overall operating cost.

YOU CAN'T BEAT A **THERMTRONIX®** FURNACE
MEASURED EFFICIENCIES AS HIGH AS
0.175 KWHR/LB OF ALUMINUM TO 1300 F.

SF / RS SERIES MODEL NO.	CAPACITY LB / KG	POWER RATING †	POWER INPUT VAC † 3 PHASE 60/50 Hz. VOLTS - AMPS	MELT RATE ‡ - 1300 F ALUMINUM - (700 C)
250 *	250/LB (115 KG)	25KW	480/240 - 30/60	130/100LB/ HOUR (60/45)
350 *	350/LB (160 KG)	50KW	480/240 - 60/120	265/200 LB/ HOUR (120/90)
500*	500/LB (230 KG)	50KW	480/240 - 60/120	265/200 LB/HOUR (120/90)
650**	650/LB (300 KG)	75KW	480/240 - 90-180	395/300 LB/HOUR (180/135)
900**	900/LB (400 KG)	75KW	480/240 - 90/180	395/300 LB/HOUR (180/135)
1200**	1200/LB (550 KG)	100KW	480/240 - 120/240	525/400 LB/HOUR (235/180)
1500**	1500/LB (700 KG)	100KW	480/240 - 120/240	525/400 LB/HOUR (235/180)
2000 §	2000/LB (900 KG)	125KW	480/240 - 150/300	650/500 LB/HOUR (290/225)
2300 §	2300/LB (1050 KG)	125KW	480/240 - 150/300	650/500 LB/HOUR (290/225)
2500 §	2500/LB (1150 KG)	125KW	480/240 - 150/300	650/500 LB/HOUR (290/225)
3000 §	3000/LB (1370 KG)	125KW	480/240 - 150/300	650/500 LB/HOUR (290/225)

NOTE: All furnaces available in Steel Frame Box or Rolled Steel Shell models.

* Available in Low-Profile only

** Available in Low-Profile and Standard Height

§ Available in Standard Height only

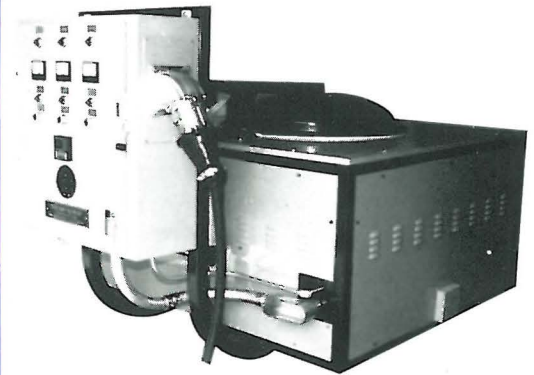
† Lower power ratings available on all furnaces for holding operations, other voltages i.e., 380V, 575V, etc., also available - consult factory

‡ Melt rate will vary with type of operation (i.e. tap and charge or batch melt) melt rates assume hot furnace, clean crucible, dense charge, lid closed, and maximum power.

DESIGN AND SPECIFICATION SUBJECT TO CHANGE WITHOUT NOTICE

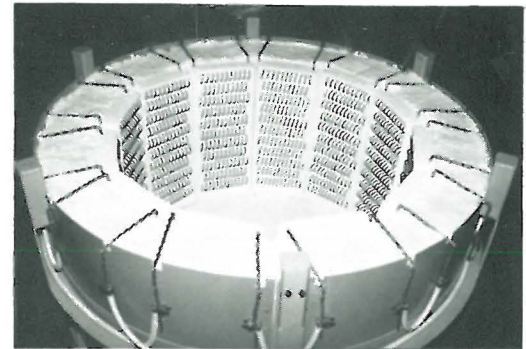
PRODUCT BULLETIN 1205

"MOBILE" PLUG-IN MELTING



This truly transportable "PLUG-IN" option is available from **THERMTRONIX®** on all rolled steel shell and steel frame models.

HEAVY DUTY POWER PANELS™ by **THERMTRONIX®** make the difference.



MAXIMUM EFFICIENCY
HIGH PERFORMANCE MELTING



SOLID STATE POWER
Underwriters Laboratories Inc.®
LISTED



THERMTRONIX® the recognized worldwide "industry standard" for solid state aluminum melting.